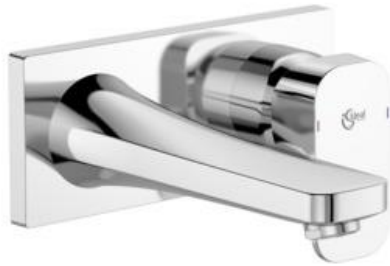


Product Description

Basin mixer wall mounted kit2



Tonic II built in basin mixer kit 2, with maximum 5lt/min flow rate, with 47 mm cartridge, 180 mm spout projection, hot water limiter integrated in the cartridge, metal handle, metal escutcheon, adjustable aerator M24x1, noise class 1, chrome for combination with kit 1 A5948NU.

DESCRIPTION

Designed for living

Tonic II is more than just a beautifully designed range to wow and entice. It's a range perfectly tailored to make your life easier. Each product is carefully considered to make using your bathroom space all the more enjoyable. Vessels and vanities, toilets with new Aquablade® flushing technology or rimless options and bidets: the luxury pieces come in different sizes and the basins are available with the addition of a coloured rim to match your chosen furniture colour palette. Whatever your space or individual tastes, you're sure to find a solution from within the Tonic II range.